



Providing what is needed for the planet and our future




Fujita Corporation

4-25-2 Sendagaya, Shibuya-ku, Tokyo 151-8570 Tel +81-3-3402-1911 Fax +81-3-3404-8477

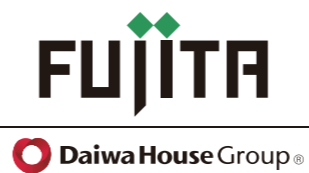
<https://www.fujita.com/>

*"Endless Heart" is a registered trademark or trademark of DAIWA HOUSE INDUSTRY CO., LTD. in JAPAN and other countries.
© Copyright 2023 DAIWA HOUSE INDUSTRY CO., LTD. All rights reserved.

 We Build ECO | Supporting forest care — "green" papermaking



Our website



Creating superior environments for our future

Since Fujita was first established, we have capitalized on our years of experience and top-notch technology to evolve and create new value. In 2013, we became a member of the Daiwa House Group and in 2015 we merged with Daiwa Odakyu Construction, bringing our years of construction engineering know-how to the comprehensive strengths of the Daiwa House Group and contributing to a wide variety of community development projects and overseas projects.

Social issues like natural disasters and climate change have become more complex, and the pandemic ushered in a new way of life and new values in society. All of this will accelerate further in future, and it seems that society as a whole will shift to the building of a sustainable and resilient economy and society.

Fujita will work actively on environmental endeavors such as building a zero-carbon society and achieving carbon neutrality, while utilizing DX and environmental technology for more dynamic construction and evolved community development to provide our customers with the value they really need. We hope you will continue supporting us and accompanying us on this journey.

President and CEO



Construction business

With a record and technology we've built over generations, we provide one-stop services for a wide range of construction projects, from design to building to maintenance and management.

» P.8



Community development business

We use our comprehensive strengths, from our construction and civil engineering technology to our planning capabilities, to carry out community development that achieves its objectives. With our wide-ranging project approaches and know-how, we help to solve community issues.

» P.12



Continuously growing with our customers and working to create a rich future.

With these four pillars of our business, Fujita meets customers' diversifying needs.

Fujita's record and technology

The Daiwa House Group's business capabilities

We aim to utilize the comprehensive strength of the Daiwa House Group to be a partner that adds value for customers.

We combine Fujita's history of over 100 years as a general construction business with the synergies that the Daiwa House Group makes possible to create environments where people can live with comfort, security and safety.

Civil engineering business

We work on a variety of civil engineering projects, including building infrastructure that society needs and making improvements to prevent or reduce damage in a disaster. We utilize our outstanding technology to solve customers' issues as we all work toward a zero-carbon society.

» P.10



International experience

As one of the first general construction businesses in Japan to expand overseas, we are involved in a wide range of fields, from production and logistics facilities to railways. We draw on our extensive experience to provide services that meet people's needs.

» P.14



Sustainability initiatives



Fujita pays close attention to society's goals, such as environmental conservation, diversity and equality, and works together with our customers to achieve those goals and become a sustainable company.

E NVIRONMENT

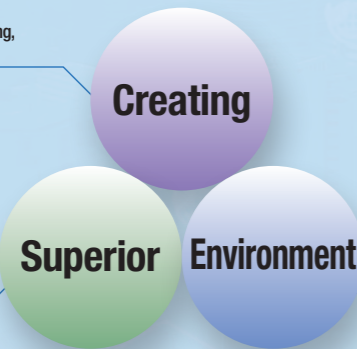
Eco-focused management since the 80s

- In 1989, we established our Global Environment Office, the first dedicated environmental division in the construction industry, and were among the first to work on pivotal environmental management initiatives.
- Today, Fujita is working to achieve zero environmental burden under comprehensive management policies that integrate safety, quality and eco-friendliness under the Fujita Eco-Charter.

Fujita's slogan: Creating Superior Environments

Construction, research and development, creation, planning, social contributions

Good, happy, high quality, rich, 21st century, harmony, advanced technology, innovation, technology, clean, amenities, intelligence



The whole planet, nature, countries, societies, cities, community buildings, homes, workplaces

We aim to contribute to the building of a sustainable society by creating comfortable and rich environments for people, society and the planet.

Initiatives to decarbonize our business activities

- We are dedicated to decarbonization initiatives to meet the Japanese government's target to achieve net zero greenhouse gas emissions by 2050.
- We are implementing measures to conserve energy and use renewable energy, particularly in our construction division, which accounts for around 90% of the CO2 emissions in our domestic business.

Specific initiatives

- Promoting the use of renewable energy
- Designing new buildings to ZEB* specifications
*Net Zero Energy Building, a building designed to achieve zero annual net primary energy consumption.
- Use of fuel-saving heavy machinery, promotion of green procurement, etc.
- Setting CO₂ reduction targets for both Fujita and its supply chain
- Research, development and release of new zero-carbon technology
- Proposing eco-technology to solve social issues

Official website:
 Our environmental initiatives
<https://www.fujita.co.jp/sustainability/env/>



S OCIAL

To ensure our customers' satisfaction

- We build and operate quality management systems, and have a quality management framework in place that connects all of our departments, from design to follow-up services.

Improving the quality we provide to customers through VE activities

In 1968, Fujita was the first Japanese construction business to introduce the VE (value engineering) method. Today, our VE activities are carried out in every field and department of our business to maximize the quality we provide to customers.

About VE (value engineering)
 An engineering method in which the organization evaluates the link between how the customer wants the product to work (function) and the resources necessary to achieve that, and then proposes the optimal method, providing a high level of customer satisfaction.

$$\text{Value (Value of the product or service)} = \frac{\text{Function (Function performed by the product or service)}}{\text{Cost (Cost of the product or service)}}$$

Collaborating with our affiliated companies

- We believe that if our affiliated companies understand our policies about points such as safety, quality and the environment, this will lead to greater customer satisfaction.
- We consider our affiliated companies to be the stars of our manufacturing and important partners in Fujita's construction business, and have formed Fujita Tokokai National Alliance as a cooperative between our affiliated companies.
- Our affiliated companies are an important part of our business, and we are striving to build a framework to strengthen our partnerships even further, ensure steady business for our affiliated companies and grow together.

Creating workplaces that are comfortable and fulfilling

- We create opportunities for everyone to show their ambitions and skills and approach their work and lives in various ways.
- Initiatives to this end include reforms in our work practices to provide a work-life balance, promotion of diversity, and a focus on health in our management.

Official website:
 Our social initiatives
<https://www.fujita.co.jp/sustainability/society/>



A general meeting of F-net (Fujita Female Career-track Employees' Network)

G OVERNANCE

Corporate Governance

- The whole of the Fujita Group is working to strengthen our governance through a corporate governance framework that complies with the Daiwa House Group's Corporate Governance Guidelines.
- We have established an auditing organization with third-party checks as an internal mechanism to ensure that our business is conducted in an expedient and fair manner.
- In addition to our Board of Directors and our auditors, audits are conducted by our Internal Audit Department and we have established a Compliance Supervisory Committee comprising experts such as attorneys to ensure that our corporate activities are legally compliant, fair and ethical.

Compliance initiatives

- In keeping with our management based on ESG and the SDGs, we are expanding the scope of our risks and compliance. In addition to initiatives for compliance with various laws and prevention of harassment, we are taking measures outside the scope of legal compliance such as supply chain management and human rights measures.

■ Cycle for improvement of human rights awareness



Risk management to prepare for every hazard

- We address every risk, from major disasters to information security breaches, with a basic framework of "early detection, early response - take thorough prevention measures and don't miss the signs" to avoid risks.
- We work together with the Daiwa House Group Risk Management Committee to respond quickly to issues and risks and share information. In an emergency, we work together with the Group's risk management framework to execute a fast response.

Information security measures



BCP



Helpline*



*Whistleblowing and consultation helpline that employees can use for reporting and consultation of legal and ethical violations

Official website:
 Our governance initiatives
<https://www.fujita.co.jp/sustainability/governance/>





Construction business

With exacting plans and proposals, optimized and streamlined designs, and a wealth of construction technology developed throughout our years in business, we deliver the buildings our customers are looking for. We have built a framework for total construction services that go beyond construction to maintenance and management of the building after it is completed. This framework, combined with the latest construction technology, enables us to meet our customers' diversifying needs.

Official website:
Our civil engineering business
<https://www.fujita.co.jp/construction/>



Construction specialists with expertise in areas such as logistics and commercial facilities and railway facilities

We have a wide range of experience in domestic projects, from major logistics facilities to production and commercial facilities, residential buildings, railway facilities, and medical and welfare facilities. We make maximum use of our specialist knowledge of various fields to ascertain what our customers need and provide the building they're looking for.



DPL Ibaraki-Kita

Total management of a building's operational processes with BIM

We actively introduce and utilize BIM (building information modeling) in our design and construction projects. We use digital information for cross-sectional management of every process, from proposals to design, construction, and maintenance and management to help our customers understand our construction processes and provide new value.



Automating work with robots for greater efficiency and safety

In recent years, attention has turned to the use of work robots as a DX initiative on construction sites. Like many companies, Fujita has introduced robots such as the SWAN[®] automated welding robot system, the four-legged walking robot Spot, and robots for transporting parts and materials. We are doing everything we can to utilize these to improve work efficiency, enabling projects to be completed more quickly, and to improve safety on sites.



Four-legged walking robot Spot

Project Story » Construction project for Daiwa House Group's new Training Center



Making the impossible possible: a challenge and a strong bond

The Daiwa House Group's new training facility has a striking, cutting-edge design. Find out how the team accomplished this complex, difficult project by working together.

<Project Story>
Construction project for Daiwa House Group's new Training Center





Photo provided by West Nippon Expressway Company Limited January, 2017

Civil engineering business

We meet a wide range of civil engineering needs, from infrastructure construction such as road and rail construction and land reclamation to quake-proofing and reinforcement for disasters, removal of structures, and the construction of renewable energy generation facilities for a zero-carbon society. We utilize the latest technology and develop proprietary technology to lay the foundations for safety and security in people's lives.

Official website:
Our civil engineering business
https://www.fujita.co.jp/civil_engineering/



Extensive record in construction of transport infrastructure and energy facilities

In our transport infrastructure projects, we build and maintain a wide range of infrastructure from roads, tunnels, and expressway interchanges and junctions to railway facilities, airports and bridges, laying the foundations for a safe and secure society. We also have an extensive record of energy projects, including land reclamation for wind and solar facilities, where we have contributed to the building of a carbon-neutral society through the adoption of renewable energy.



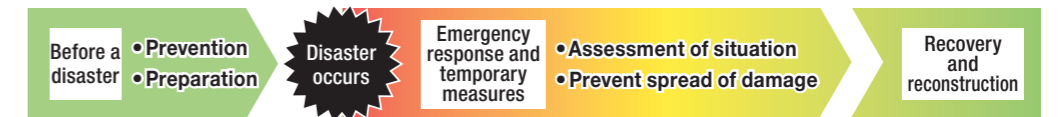
Shinden Station to Joyo Station on the JR Nara Line



Solar power equipment in Hitachi Showa Village

Tangible and intangible anti-disaster initiatives

We have contributed to many recovery and reconstruction projects after disasters. With disasters now happening almost every year, we consider anti-disaster initiatives to encompass not only prevention but every phase required in the event that a disaster does happen, including emergency response, temporary measures and repair and reconstruction work, and we actively work to develop technology that will contribute to this work.



Examples of technology used

Drone measurement technology is used to assess the scope of damage and amount of ground washed away



FT Mud Killer instantaneously improves the condition of soil that has turned into sludge



Robo QS enables remote backhoe operation in areas that people cannot access after a disaster



Project Story

» Arase Dam removal project



Creating new value: A challenge that had never been accomplished in Japan before

This was Japan's first removal of a concrete dam, and we had to overcome many difficulties to complete the project. Fujita specializes in construction work, but now we had to carry out deconstruction work. And in the end, our construction experience was the reason why we succeeded.

<Project Story>
Arase Dam removal project





Community development business

In our community development business, we use Fujita's comprehensive strengths to solve issues. We make maximum use of the know-how we have developed in every stage of the process, including planning and proposals centering on our construction technology, coordination of the complex relationships of rights in communities, various project approaches, and permit application processes requiring specialist knowledge, to contribute to improving the value of our customers' assets and corporate value.

Official website:
Our community development business
<https://www.fujita.co.jp/townplanning/>



Executing projects as a general coordinator

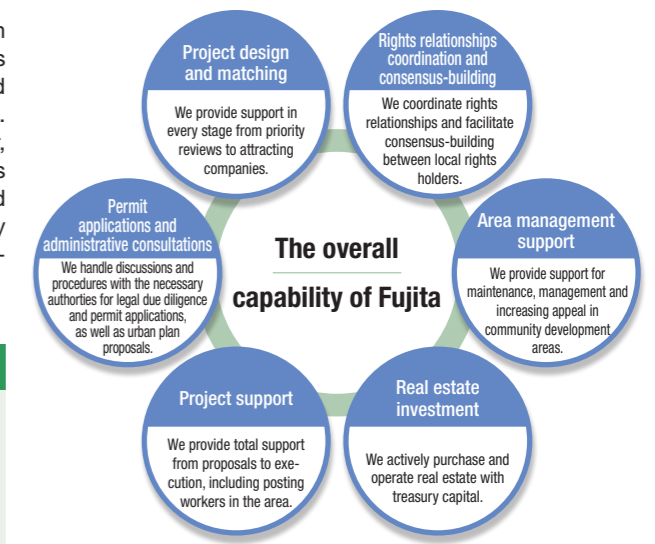
Community development such as urban renewal and land reallocation comes with issues that need to be solved through various project approaches. Fujita acts as a general coordinator, liaising with the various stakeholders involved in community development and meeting their wide-ranging needs by proposing effective methods and ensuring smooth execution of the project.

Community development know-how

- » Priority review
- » Coordination of rights relationships
- » Investment and funding
- » Attracting business
- » Operational management

Community development technology

- » Design and permit applications
- » Construction work
- » Civil engineering work
- » Supplying technology



Supporting community development through various project approaches

We choose the optimal project approach based on what the customer wants and help to improve the value of their assets and their corporate value.



Real estate development projects

Fujita acquires land and builds and operates buildings such as logistics facilities, hotels and offices.



Urban renewal projects

We provide support for urban renewal in communities such as the building of disaster-proof communities and compact cities.



Land reallocation projects

We maintain and improve residential areas and public facilities such as roads and parks based on the Land Readjustment Act to improve the value of the land.



PFI

We participate in public organizations' community development projects as a private business to contribute to improving the quality of public services.



Projects for effective land use

We make effective use of land, whether it's corporate, public or private land, to contribute to increasing its value.



Equivalent exchange projects

We carry out integrated development of land with complex rights relationships to enable the construction of buildings with a high degree of value.

Project Story

» Type 1 urban renewal project in area around Kita 4 Higashi 6



Creating the future: The thought that goes into our community development

In this renewal project, we utilized the comprehensive strengths of the Daiwa House Group. Find out how we succeeded in one of the largest community development projects Fujita has ever undertaken.

<Project Story>
Type 1 urban renewal project in area around Kita 4 Higashi 6





International experience

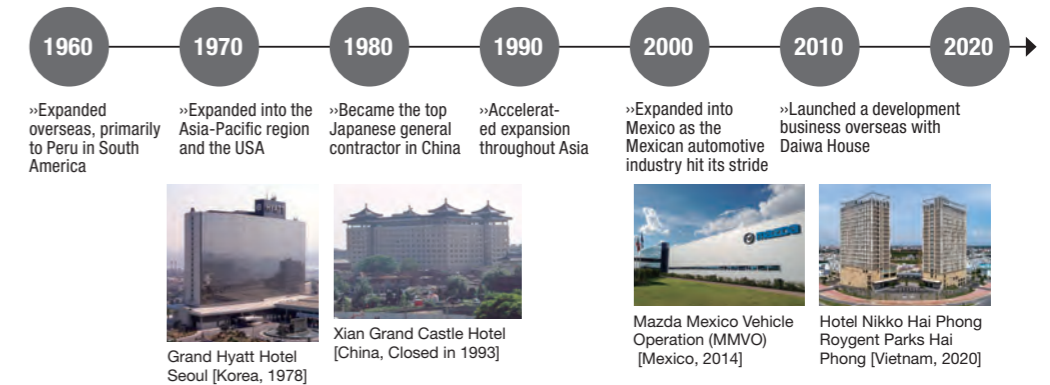
Fujita has an extensive track record of overseas projects spanning over 50 years. We provide a one-stop service that meets a wide range of customer needs, starting with surveying support such as site surveys and project planning with consideration for the local culture and business customs and covering processes such as permit applications according to the local legal system, high-quality construction and follow-up processes such as maintenance, management, repairs and upgrades.

Official website:
Our international experience
<https://www.fujita.co.jp/overseas/>



One of the first Japanese construction businesses to begin overseas projects

Fujita took its first step into overseas projects when it sent a team to South America for a survey in the 1960s. Since then, we have set up bases in areas around the world, including Latin America, China, Southeast Asia, India, the Middle East and Africa. We are renowned for the know-how and human capital we have developed over our years in business and for the advanced technology and high-quality service that only a Japanese general contractor can provide.



Providing technology and services with Japanese quality around the world

Fujita has completed construction projects in countries and regions around the world. Our extensive architectural record includes factories, logistics facilities and offices for Japanese companies, along with hotels, high-rise condominium complexes, schools and hospitals. In civil engineering, we have utilized Japanese technology to build infrastructure such as railways, airports and roads. We have also established a development business combining our community development know-how with the synergies that the Daiwa House Group makes possible.

- Affiliated companies
- Fujita Americas, Inc.
 - Fujita (China) Construction Co., Ltd.
 - Fujita Philippines Construction and Development, Inc.
 - Fujita Corporation Vietnam
 - Fujita Engineering India Pvt., Ltd.
 - Fujita Integral Mexico S.A. de C.V.
 - Fujita Corporation (M) Sdn. Bhd.
 - Fujita Corporation (Thailand) Ltd.

■ Main bases



Project Story » Development of hotels and serviced apartments in Mexico



Bringing a Japanese lifestyle to Mexico:
We wanted to support people in their dreams of overseas expansion. With over 1,300 Japanese companies having expanded into Mexico, we wanted to contribute to the lifestyles of the Japanese employees posted there. Find out what Fujita has built for them.

<Project Story>
Development of hotels and serviced apartments in Mexico

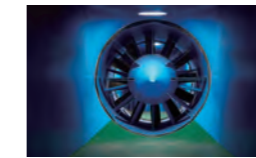




Solutions and technology

At Fujita Technology Center, our R&D base, we are accelerating our development of technology such as architectural and civil engineering technology that will contribute to security, safety and comfort in people's lives, DX technology to transform our construction processes, and GX technology such as eco-friendly technology.

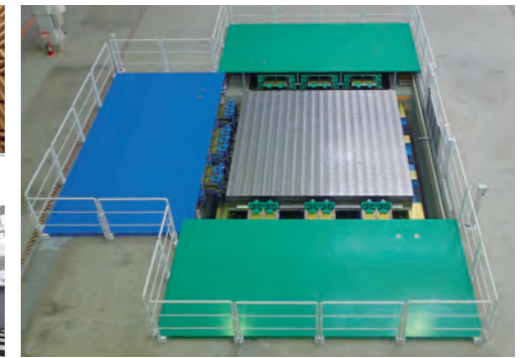
Official website:
Fujita Technology Center
https://www.fujita.co.jp/tech_center/



Wind tunnel facilities



Anechoic chamber



Electric triaxial vibrating table



Solar power system



Presentation room

Various new technologies made by Fujita are contributing to solving social issues

Notable developments

Construction technology

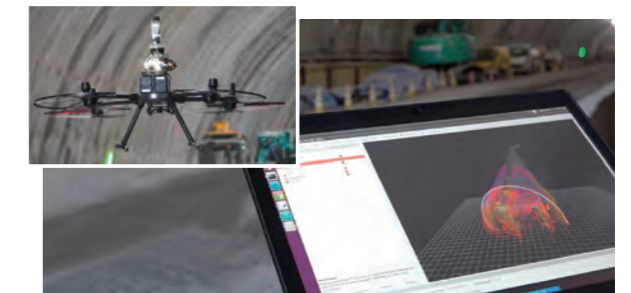
We are developing design and construction technology that enables high-quality buildings to be built in a safer, faster, more cost-effective way.



Our SWAN[®] automated welding robot system for construction sites, which improves efficiency and reduces workload in the welding of square steel pipe column joints.

Civil engineering technology

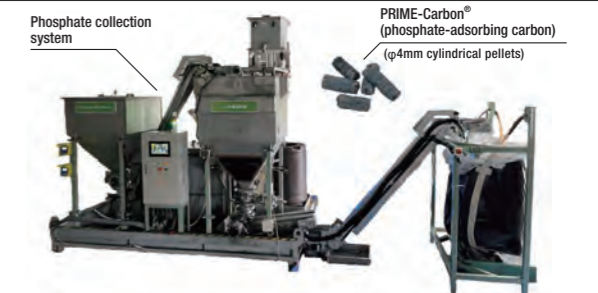
We are developing technology for disaster prevention and recovery, infrastructure upgrades, recycling, and other functions that are foundational to secure and safe communities.



Our drone system that flies through tunnels. This system enables steady autonomous flight of drones even in closed spaces, making it possible to automate collection of information on the progress of work.

Environmental technology

We are developing technology that enables harmony between people, cities and nature, such as environmental surveying and simulation technology, environmental cleaning and resource recycling technology, and energy-related technology.



Using a proprietary production technique, we added phosphate adsorption properties to biocarbons from biomass generated by processes such as woody biomass power generation, creating PRIME-Carbon[®]. Phosphates removed and collected from sources such as drainwater can be used as fertilizers, enabling carbon capture on agricultural land.

Official website:
Our solutions and technology
<https://www.fujita.co.jp/solution-technology/>



Construction business



DPL Ibaraki-Kita [Osaka, 2022]
→ Details
<https://www.fujita.co.jp/works/12333/>



Central Japan International Medical Center [Gifu, 2021]
→ Details
<https://www.fujita.co.jp/works/11502/>



Kanto Gakuin University Kannai Campus [Kanagawa, 2022]
→ Details
<https://www.fujita.co.jp/works/12397/>



molten [the Box] [Hiroshima, 2022]
→ Details
<https://www.fujita.co.jp/works/12321/>



RYUKYU HOTEL&RESORT NASHIRO BEACH [Okinawa, 2022]
→ Details
<https://www.fujita.co.jp/works/12081/>



©Forward Stroke Inc.

GRANODE Hiroshima [Hiroshima, 2019]
→ Details
<https://www.fujita.co.jp/works/640/>



YOKOHAMA BUDOKAN [Kanagawa, 2020]
→ Details
<https://www.fujita.co.jp/works/428/>



Civil engineering business

Photo supplied by West Nippon Expressway Company Limited, January 2017



Yawata Junction, Shin-Meishin Expressway [Kyoto, 2020]
→ Details
<https://www.fujita.co.jp/works/681/>



Nakao Tunnel, Nagasaki Expressway [Nagasaki, 2019]
→ Details
<https://www.fujita.co.jp/works/601/>



Construction of Oita Pal Town [Oita, 2019]
→ Details
<https://www.fujita.co.jp/works/592/>



Ichinoshinden Dam [Niigata, 2019]
→ Details
<https://www.fujita.co.jp/works/537/>



Hosoe Mega Solar PV Park [Miyazaki, 2018]
→ Details
<https://www.fujita.co.jp/works/1247/>



Malaysia KVMRT NO.1 Line Slab Track Construction [Malaysia, 2016]
→ Details
<https://www.fujita.co.jp/works/1736/>



Mishima Beach [Miyagi, 2020]
→ Details
<https://www.fujita.co.jp/works/457/>



Other accomplishments
<https://www.fujita.co.jp/works/>



Community development business



Urban renewal in center-north of Nishi-Shinjuku 5-chome [Tokyo, 2017]
 → Details
<https://www.fujita.co.jp/works/1746/>

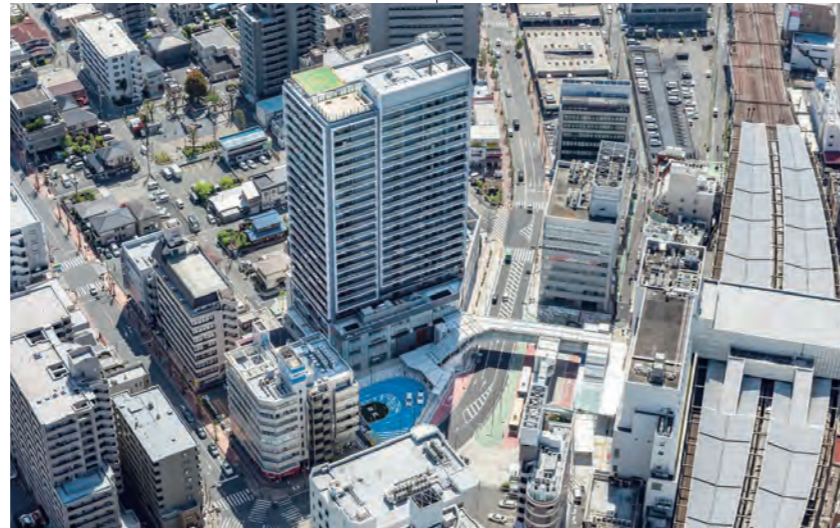


Urban renewal around south exit of Hon-Atsugi Station [Kanagawa, 2021]
 → Details
<https://www.fujita.co.jp/works/419/>

Land reallocation around Toyota Shigo Station [Aichi, 2021]
 → Details
<https://www.fujita.co.jp/works/402>



Land reallocation in center-east of Tobu, Saito [Osaka, 2021]
 → Details
<https://www.fujita.co.jp/works/398/>



Real estate development projects



DPL Isehara [Kanagawa, 2021]
 → Details
<https://www.fujita.co.jp/works/305/>



Daiwa Roynet Hotel NISHI-SHINJUKU [Tokyo, 2019]
 → Details
<https://www.fujita.co.jp/works/808/>



Shibadaimon 2-chome Building [Tokyo, 2022]
 → Details
<https://www.fujita.co.jp/works/13211/>

International experience



Makita China Plant [China, 2021]
 → Details
<https://www.fujita.co.jp/works/4813/>



Tokyo Electron Korea Ltd. PTSC (Pyeongtaek Technical Support Center) [South Korea, 2019]
 → Details
<https://www.fujita.co.jp/works/453/>



RUDRAKSH - International Cooperation and Convention Centre [India, 2020]
 → Details
<https://www.fujita.co.jp/works/4329/>



Mitsubishi Electric Querétaro Factory [Mexico, 2020]
 → Details
<https://www.fujita.co.jp/works/317/>



Factory in Hanoi for YKK Vietnam [Vietnam, 2019]
 → Details
<https://www.fujita.co.jp/works/474/>



Taicang Sundiro Honda [China, 2021]
 → Details
<https://www.fujita.co.jp/works/4317/>



Plurinational State of Bolivia Okinawa Road Pavement Project [Plurinational State of Bolivia, 2023]
 → Details
<https://www.fujita.co.jp/works/13090/>

Other accomplishments
<https://www.fujita.co.jp/works/>

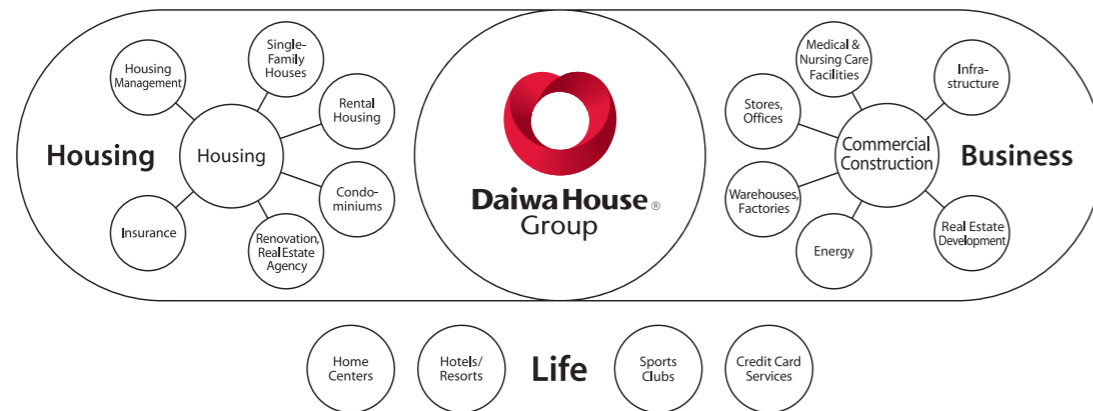


Creating Dreams, Building Hearts

The Daiwa House Group symbol — the Endless Heart — represents our vision of building endless emotional connections with each and every one of our customers, as well as the solidarity of the Daiwa House Group.

As a group that co-creates value for individuals, communities, and people's lifestyles, we are working to create new value for society.

Daiwa House Group —
working to co-create value for individuals, communities and people's lifestyles



Daiwa House Group www.daiwahouse.co.jp

Japan

Daiwa House Industry	Daiwa House Real Estate	Daiwa Energy	Daiwa House Financial	Cosmos Initia	Daiwa LogiTech
Daiwa Lease	Daiwa Roynet Hotels	Eneserve	Daiwa House Insurance	Cosmos More	Frameworx
DesignArc	Royal Home Center	Osaka Marubiru	Daiwa House Real Estate Investment Management	Cosmos Life Support	acca international
Daiwa Logistics	Daiwa House Reform	Nishiwaki Royal Hotel	DD Innovation	Daiwa Cosmos Construction	Daiwa House Parking
Daiwa Living	Daiwa House Chintai Reform	Fujita	D.U-NET	Cosmos Hotel Management	Parking Solutions
Daiwa Estate	Daiwa Royal Golf	Media Tech	Daiwa LivingTrust	Wakamatsu KONPOU UNYU SOKO	Daiwa House Bloom
Daiwa LifeNext	Daiwa Lantec	Shinwa Agency	Daiwa Living Care	JUST Logistics	
Global Community	Daiwa House Life Support	Daiwa CoreFactory	Daiwa House property Management	Kouyama UNYU	
Daiwa House Realty Mgt.	Sports Club NAS	Daiwa House Asset Management		DiceNext	

Overseas

DH (Dalian) Administrative Management Consulting Center	Taiwan Daiwa Development	Daiwa House Vietnam	Stanley-Martin Communities
Daiwa House (Changzhou) Real Estate Development	Fan Lu Construction Industry	Daiwa Living Vietnam	Trumark
Daiwa Baoye (Nantong) Real Estate Development	Daiwa House Texas	Daiwa Logistics Vietnam	CastleRock
Jiuxin(Changzhou) Real Estate Development	Daiwa Living California	DT Development Vietnam	Rawson
Daiwa Baoye(Jiangsu) Property Management	Daiwa House Australia	DH Logistic Property Vietnam	Daiwa House Modular Europe
Fujita (China) Construction	Cosmos Australia	Daiwa House Indonesia	Jan Snel
Shanghai Hebao Property Service	Daiwa Living Australia	Daiwa LifeNext Indonesia	Daiwa Royal Korea
	Daiwa Living Nesuto Holdings	Nas Fitness Indonesia	
	Daiwa House Malaysia	Daiwa House Indutry (Thailand)	
	DH Asia Investment	Daiwa House Construction Management	

(As of January 1, 2023.)

Fujita Corporation Official Website
<https://www.fujita.com/>



Fujita Corporation Recruitment Website
www.fujita.co.jp/recruit/fresher



2023 company overview

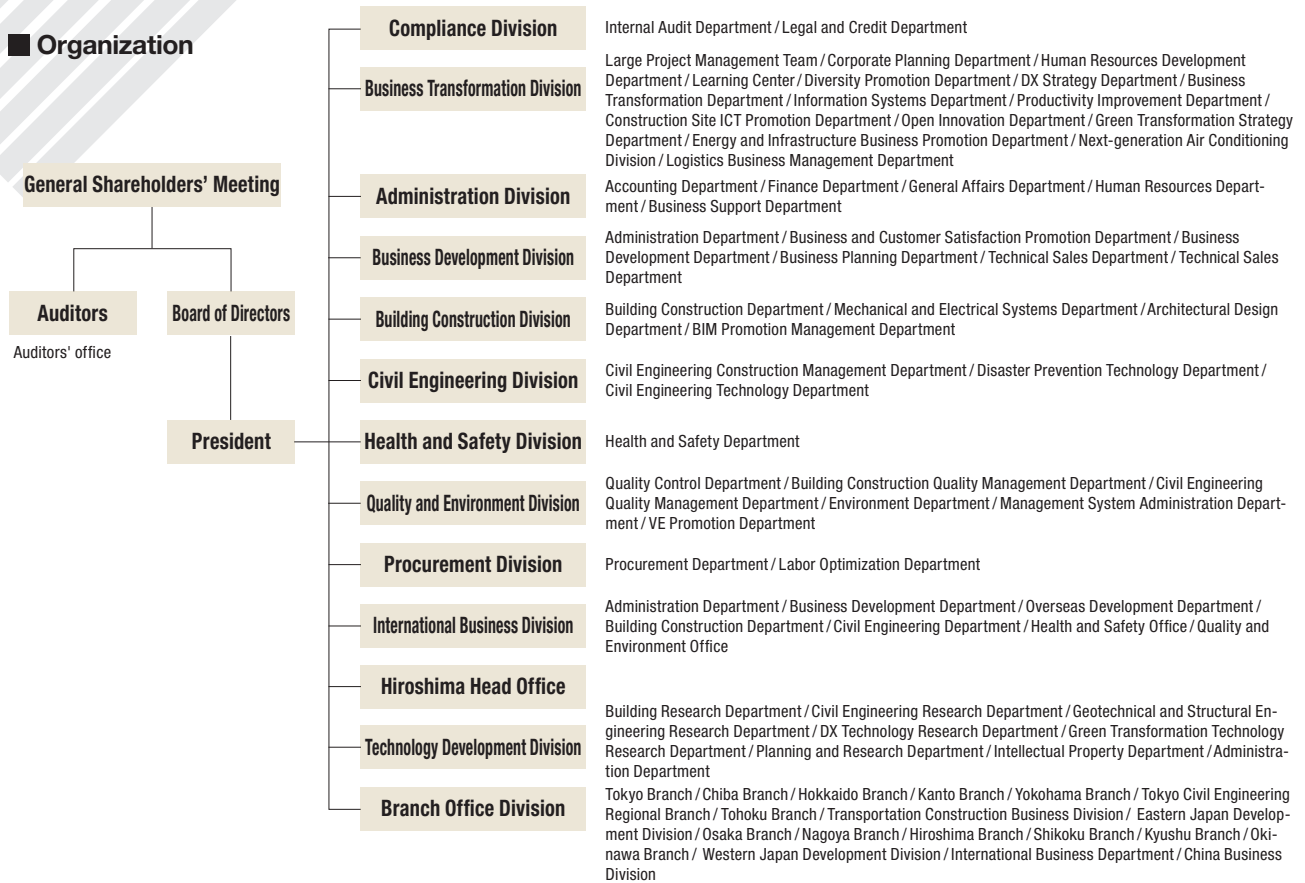
Overview

Company name	Fujita Corporation		
Headquarters address	4-25-2 Sendagaya, Shibuya-ku Tokyo, 151-8570 Japan (Headquarters address on commercial registry: 4-32-22 Nishi-Shinjuku, Shinjuku-ku, Tokyo)		
Representative	President and CEO Yoji Okumura		
Established	December 1, 1910		
Incorporated	October 1, 2002		
Contractor's license	Ministry of Land, Infrastructure, Transport and Tourism (Special-4) No.19796		
Building lots and buildings transaction business license	Ministry of Land, Infrastructure, Transport and Tourism License (5) No. 6348		
Capital	14 billion yen		
Number of employees	3,443 (As of April 1, 2023)		
Number of licensed employees	Doctorates in engineering, science, and other fields: 36 Registered architects, first class: 652 Registered supervising engineers of civil engineering work, first class: 774	Professional engineers: 209 Registered supervising engineers of construction work, first class: 1,029 Registered real-estate brokers (certified): 616	
Business details (Articles of Incorporation)	<ol style="list-style-type: none"> Contracting, planning, design, supervision, and consulting services for construction projects Research, planning, design, management, and consulting services related to space development, marine development, community development, urban development, resource development, and environmental improvement Real estate appraisals and business operations related to real estate buying, selling, trading, leasing, and management as well as agent and mediation services Type II nancial instruments business based on the Financial Instruments and Exchange Act, investment advice and agent services, and investment management services Business operations based on the Real Estate Specified Joint Enterprise Act Business operations related to the development and subdivision of residential property and the construction and sale of homes Business operations related to soil contamination studies, removal, and similar operations Business operations related to the maintenance and management of buildings, structures, and their equipment Ownership, management, and consulting services related to accommodation facilities, sports facilities, recreational facilities, health and medical facilities, educational facilities, and restaurants, as well as a travel agency business Business related to power generation and electricity supply by using wind power, solar power, geothermal power, hydropower, etc. Project development, acquisition, rentals, and sales related to industrial property rights, copyrights, other intangible property rights, expertise, and software, as well as information processing services" Business operations related to the development, sale, rental, maintenance, and management of computing devices, electronic devices, and similar equipment Business operations related to project development and sales in connection with information and telecommunication systems Business operations related to multimedia research and development Manufacturing, processing, sales, and rentals of construction materials, equipment, and machinery Business operations related to research, development, manufacturing, sales, rentals, maintenance, management and international trade of living environment equipment Worker dispatch services Money lending and other nancial services All business operations incidental to the aforementioned items 		

Directors and officers of Fujita

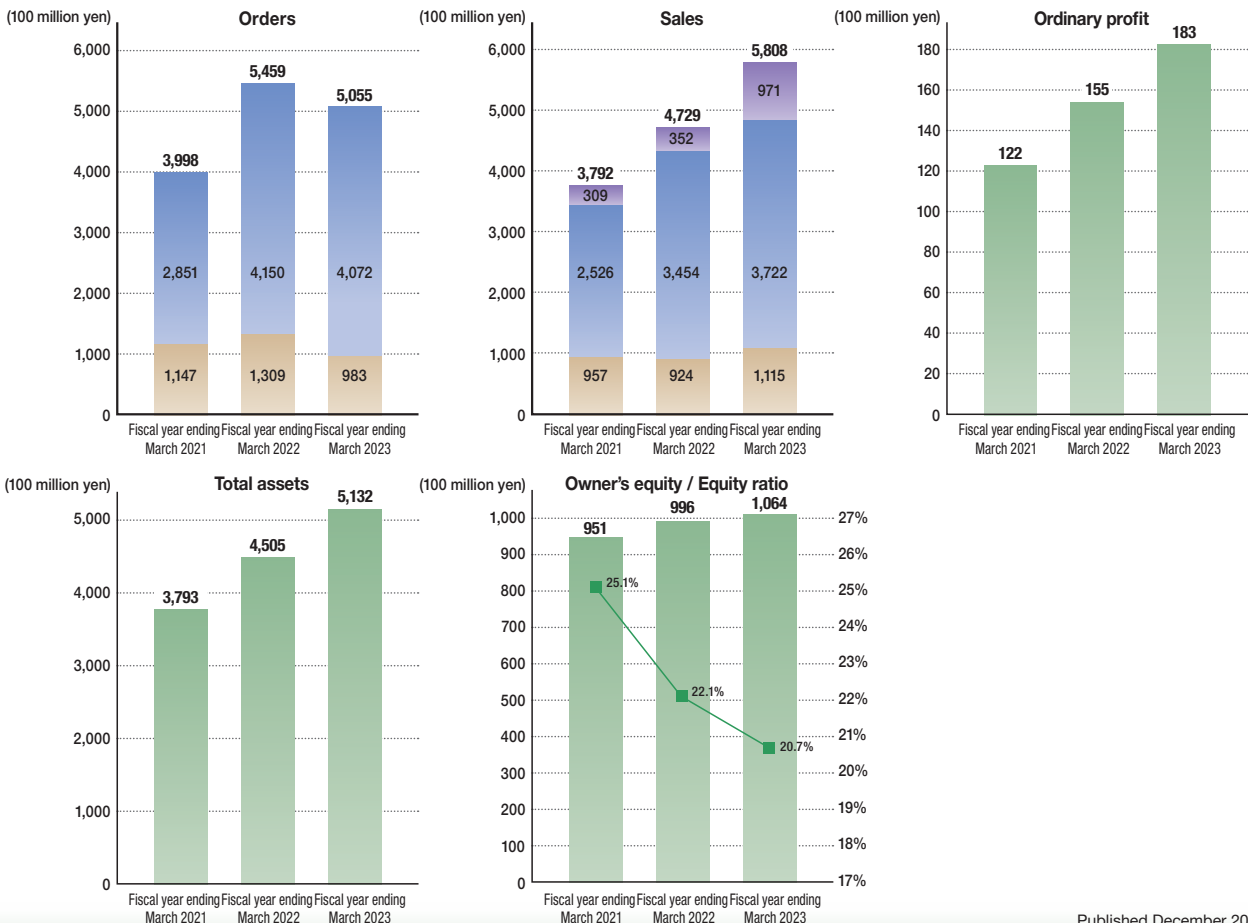
Representative director	President	Yoji Okumura						
Representative director	Senior managing executive officer	Masayuki Asakawa Toru Hirano						
Director	Senior managing executive officer	Naoki Nishioka						
Director	Executive operating officer	Masahiro Fujii	Michikazu Sora	Tokizo Okano	Tatsuya Ide	Seiji Kimishima	Yukitsuna Yamaguchi	
Director		Toshiaki Tao	Masaaki Shigetomi	Satoshi Nankou				
Director		Takeshi Kosokabe Yoshiyuki Murata			Masanori Shiina			
Auditor		Katsumi Kobayashi Koichiro Takayama						
Operating officer	Senior executive operating officer	Katsuhide Kida						
	Executive operating officer	Osamu Moriyoshi	Masahiro Okada	Yasuhide Araya	Ryuichi Miura	Yoshio Saeki		
	Senior operating officer	Toyota Fusejima	Akihisa Sato	Masaaki Nakai	Shin Watanabe	Yoshinori Kumita	Atsushi Yoshida	Shigeru Shimodaira
	Operating officer	Toshiya Takasu	Takayoshi Hirahara	Koichi Kaneko	Takeya Okuyama	Hiroshi Shinohara	Keiichi Mizutani	
		Hidetoshi Aizono	Junichi Higaki	Norio Nakamura	Takero Takiura	Yuichi Masuyama	Katsumi Maehara	Tsuyoshi Tsuchida

Organization



Fujita Corporation's business results (Civil engineering Construction Development, etc.)

*Figures from the fiscal year ending March 2022 onward are consolidated figures



■ Branches and offices

Head office	SYD Building, 4-25-2 Sendagaya, Shibuya-ku, Tokyo TEL : 03-3402-1911 FAX : 03-3404-8477
Hokkaido Branch	9th floor, Kyoto Ekimae Building, 3-1 Kita 4-jo Nishi, Chuo-ku, Sapporo-shi TEL : 011-251-6151 FAX : 011-281-2194
Tohoku Branch	3-7-33 Tsutsujigaoka, Miyagino-ku, Sendai-shi TEL : 022-794-8550 FAX : 022-794-8954 Aomori Office TEL : 017-734-7397 FAX : 017-775-3488 Morioka Office TEL : 019-622-4639 FAX : 019-654-6102 Yamagata Office TEL : 022-794-8559 FAX : 022-794-8954 Fukushima Office TEL : 024-572-6435 FAX : 024-572-6436
Tokyo Branch	4-32-22 Nishi-Shinjuku, Shinjuku-ku, Tokyo TEL : 03-5309-2100 FAX : 03-5309-2373 Tama Office TEL : 042-527-1270 FAX : 042-527-1143 Yamanashi Office TEL : 055-235-2968 FAX : 055-235-2140
Chiba Branch	1-15-1 Benten, Chuo-ku, Chiba-shi TEL : 043-253-1911 FAX : 043-253-1441 Tokatsu Office TEL : 04-7192-6311 FAX : 04-7192-6312
Kanto Branch	17th floor, Sonic City Building, 1-7-5 Sakuragi-cho, Omiya-ku, Saitama-shi TEL : 048-657-1630 FAX : 048-657-1492 Ibaraki Office TEL : 029-828-6651 FAX : 029-828-6652 Tochigi Office TEL : 028-688-7100 FAX : 028-688-7111 Hokuriku Office TEL : 076-263-7156 FAX : 076-263-0576 Niigata office TEL : 025-243-1911 FAX : 025-241-2653 Nagano Office TEL : 026-227-3651 FAX : 026-228-4396 Toyama Office TEL : 076-432-6400 FAX : 076-442-3306
Yokohama Branch	Kinko Bldg 5F, 7-3, Kinko-cho, Kanagawa-ku, Yokohama-shi TEL : 045-594-6722 FAX : 045-594-6746 Kawasaki Office TEL : 044-299-6351 FAX : 044-299-6352 Shounan Office TEL : 046-373-8564 FAX : 046-373-8572
Tokyo Civil Engineering Regional Branch	5th floor, 4-32-22 Nishishinjuku, Shinjuku-ku, Tokyo TEL : 03-5309-2694 FAX : 03-5309-2583
Nagoya Branch	4th floor, Unryu Flex West Building, 2-1-9 Shinsakae, Naka-ku, Nagoya-shi TEL : 052-259-6000 FAX : 052-259-6017 Toyota Office TEL : 056-585-8615 FAX : 056-585-8616 Shizuoka Office TEL : 054-287-5175 FAX : 054-287-3570 Fuji Office TEL : 054-567-3022 FAX : 054-567-3033 Hamamatsu Office TEL : 053-543-7970 FAX : 054-287-3570 Mie Office TEL : 059-351-1801 FAX : 059-351-1802

Transportation Construction Business Division	Zenno Shinjuku Building 5-27-13 Sendagaya, Shibuya-ku, Tokyo TEL : 03-3376-3140 FAX : 03-5315-0597
Osaka Branch	Fujita/Toyobo Building, 2-1-16 Dojima, Kita-ku, Osaka-shi TEL : 06-6348-4510 FAX : 06-6345-4560 Kobe Office TEL : 078-331-9414 FAX : 078-331-9417 Keiji Office TEL : 075-354-3326 FAX : 075-344-4771 Wakayama Office TEL : 073-432-3836 FAX : 073-432-8843
Hiroshima Head Office	5th floor, Fujita Building, 8-6 Nakamachi, Naka-ku, Hiroshima-shi TEL : 082-207-0580 FAX : 082-207-2126
Hiroshima Branch	7th floor, Shinhiroshima Building, 13-15 Nobori-Cho, Naka-ku, Hiroshima-shi TEL : 082-577-8980 FAX : 082-222-7601 Okayama Office TEL : 086-241-1361 FAX : 086-243-5596 Hiroshima Toubu Office TEL : 084-820-1455 FAX : 084-824-7066 Yamaguchi Office TEL : 083-941-5860 FAX : 083-941-5862 Tokuyama Office TEL : 083-421-0581 FAX : 083-422-0898 Sanin Office TEL : 085-937-5987 FAX : 085-922-3657
Shikoku Branch	2274-3 Ootashimo-machi, Takamatsu-shi TEL : 087-867-8711 FAX : 087-867-9001 Matsuyama Office TEL : 089-924-5045 FAX : 089-924-5062 Kochi Office TEL : 088-832-3721 FAX : 088-832-3704
Kyushu Branch	Mejjidori Business Center Main Building, 1-1 Shimokawabata-machi, Hakata-ku, Fukuoka-shi TEL : 092-281-0661 FAX : 092-281-0232 Kita Kyushu Office TEL : 093-541-2636 FAX : 093-541-2638 Oita Office TEL : 097-532-3165 FAX : 097-532-3166 Nagasaki Office TEL : 095-823-4231 FAX : 095-823-6410 Kumamoto Office TEL : 096-353-5122 FAX : 096-352-1165 Minami Kyushu Office TEL : 099-251-1555 FAX : 099-251-1556 Nobeoka Office TEL : 098-220-3817 FAX : 098-220-3818
Okinawa Branch	10th floor, Denpado Building, 2-12-21 Kumoji, Naha TEL : 098-863-7351 FAX : 098-863-6973
Architectural Design Department	Zenno Shinjuku Building 5-27-13 Sendagaya, Shibuya-ku, Tokyo TEL : 03-6384-1424 FAX : 03-6384-1491
Eastern Japan Development Division	SYD Building, 4-25-2 Sendagaya, Shibuya-ku, Tokyo TEL : 03-3796-2207 FAX : 03-3796-3103
Western Japan Development Division	Fujita Toyobo Building, 2-1-16 Dojima, Kita-ku, Osaka-shi TEL : 06-6147-6153 FAX : 06-6147-6154
Technology Development Division	2025-1 Ono, Atsugi-shi, Kanagawa TEL : 046-250-7095 FAX : 046-250-7139

■ Overseas offices

Shanghai Office	TEL : +86-21-6841-5522
Hong Kong Branch	TEL : +852-2311-1398
Philippine Branch	TEL : +63-2-8856-06-21/23
Seoul Branch	TEL : +82-2-757-6547
Hanoi Office	TEL : +84-24-3726-2452/2454
Ho Chi Minh Office	TEL : +84-28-3512-0757
Mexico Branch	TEL : +52-55-5574-3599
Taipei Branch	TEL : +886-2-2541-3600
Dubai Branch	TEL : +971-4-323-7022

India Office	TEL : +91-44-4857-4048
Yangon Branch	TEL : +95-1-373634
Malaysia Branch	TEL : +60-3-2287-6188
Singapore Branch	TEL : +65-6337-3336
Doha Branch	TEL : +974-4476-3463
Kenya Branch	TEL : +254-20-513-8505
Peru Branch	TEL : +51-01-773-6969
Bangladesh Branch	TEL : +880-96-7760-1030

■ Overseas Affiliated Company

Fujita Americas, Inc.
Fujita (China) Construction Co., Ltd.
Fujita Philippines Construction and Development, Inc.
Fujita Corporation Vietnam
Fujita Engineering India Pvt., Ltd.
Fujita Integral Mexico S.A. de C.V.
Fujita Corporation (M) Sdn. Bhd.
Fujita Corporation (Thailand) Ltd.

History

1869 onward: Extensive infrastructure development takes place as Japan modernizes

- 1869 » Sentaro Nomura, our first president, establishes Nomura-gumi in Shinjuku (Daiwa Odakyu Construction)
- 1910 » The company's first full-fledged civil engineering construction project is completed (Daiwa Odakyu Construction)



Railway laying project for Seiso Electric Railway

- » Ichiro Fujita and his younger brother Sadaichi start a company together in Hiroshima City (Fujita)



Ichiro Fujita

Sadaichi Fujita

- 1928 » The company receives an order to build a steel frame for the Metropolitan Police Department building, a steel frame structure weighing over 6,000t (Fujita)



Metropolitan Police Department steel frame project

1945 onward: Postwar recovery brings a period of high economic growth

- 1945 » World War II ends when atomic bombs are dropped on Hiroshima and Nagasaki



- » The company works on the rebuilding of Hiroshima Red Cross Hospital after the atomic bombing (Fujita)
- » The company works on the rebuilding of Shinjuku after the destruction by air raids (Daiwa Odakyu Construction)

- 1962 » The company utilizes its extensive experience overseas (Fujita)



The company dispatches a South American study group



Japanese booth at Pacific International Trade Fair (Peru)

- 1964 » Tokyo Olympics held



Komazawa Olympic Park Olympic Memorial Tower (Fujita)

- 1968 » Value engineering is introduced for the first time by a Japanese construction company (Fujita)

1970 onward: Branching out from construction: Shift to convenient cities and environments

- 1975 » The company completes Nagasaki Airport, the world's first offshore airport (Fujita)



(photo taken 1982)

- 1985 » The company strengthens its urban development business (Fujita)



Hiroshima Alpark



Saitama Industry and Culture Center (Sonic City)

- 1998 » The company carries out quake-proofing of bridge piers to protect them from major earthquakes (Daiwa Odakyu Construction)



Reinforcement of Sakawa River bridge, Tomei Expressway

2000 onwards: New technology development opens up a new future in areas such as disaster prevention

- 2011 » The company carries out recovery work around the Tohoku area after the Great East Japan Earthquake



Yamamoto Town, Watarai District, Miyagi Prefecture, where the company carried out renewal work (Fujita)

- 2013-2015 » Fujita joins the Daiwa House Group in 2013, following Daiwa Odakyu Construction in 2008

FUJITA

- » Fujita merges with Daiwa Odakyu Construction in 2015

Daiwa House Group

- 2017 » The company completes Japan's first 60-story condominium complex with proprietary support features including steel panel dampers and ultra-high-strength concrete



The Parkhouse Nishi Shinjuku Tower 60

- 2018 » The company completes Japan's first removal of a concrete dam

- » The company acquires ISO45001, ahead of the rest of the construction industry



Arase Dam, which was demolished

- 2021 » The company completes Daiwa House Group MIRAI KACHI KYOSO Center "Kotokurie". BIM is used throughout all processes for this training facility, from design to construction to maintenance and management of the building.



Daiwa House Group MIRAI KACHI KYOSO Center "Kotokurie"